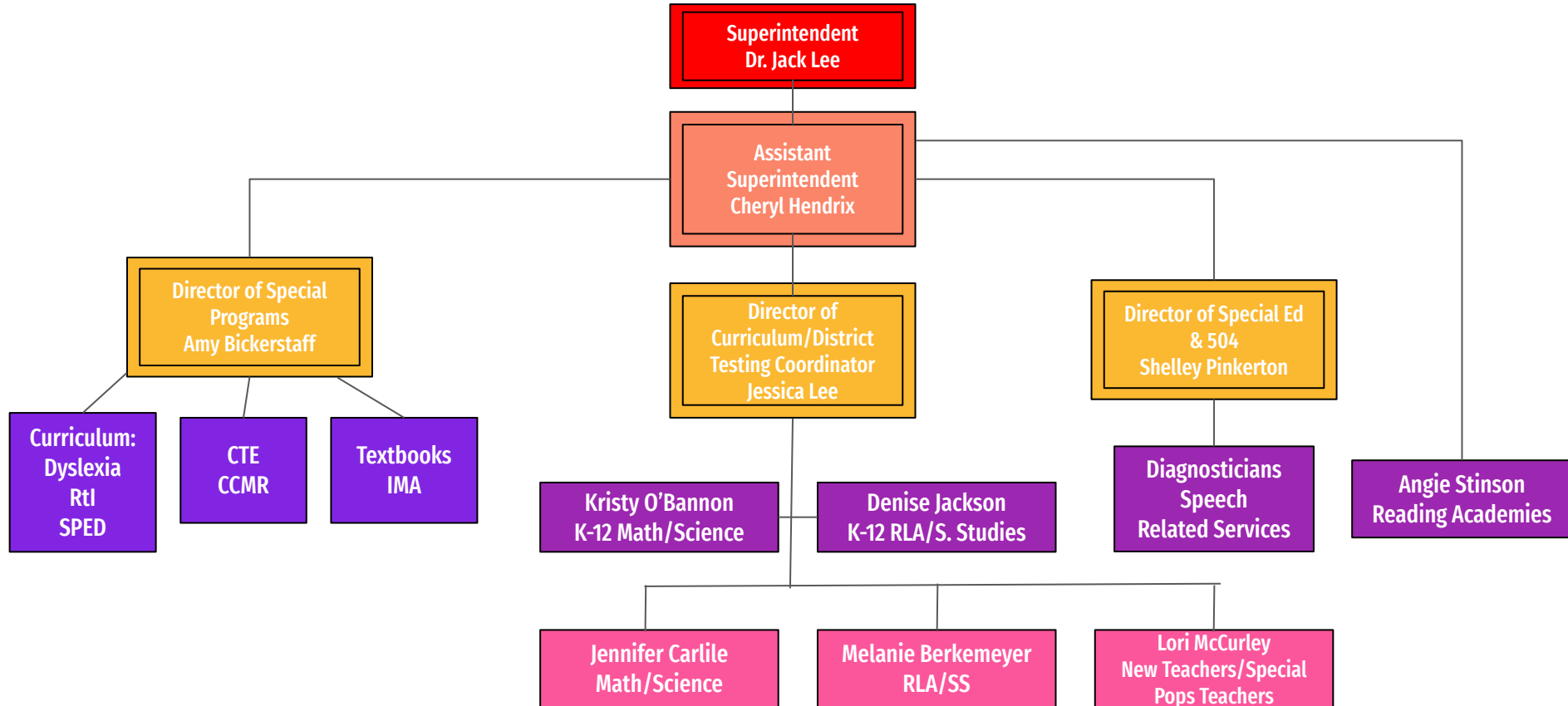


BISD Curriculum & Instruction Department

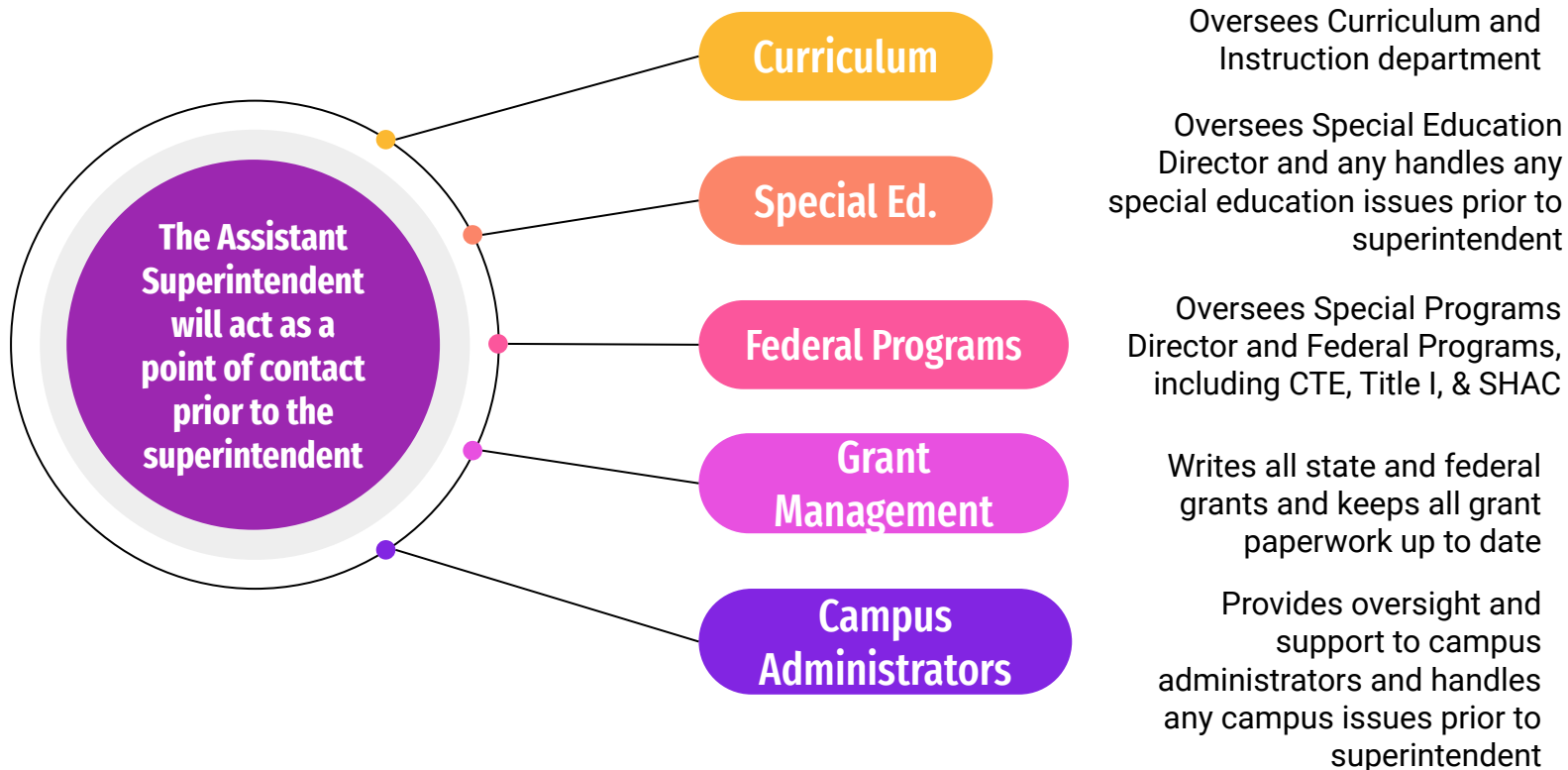
Bullard ISD Curriculum Department



*Evaluations are completed at the director level.

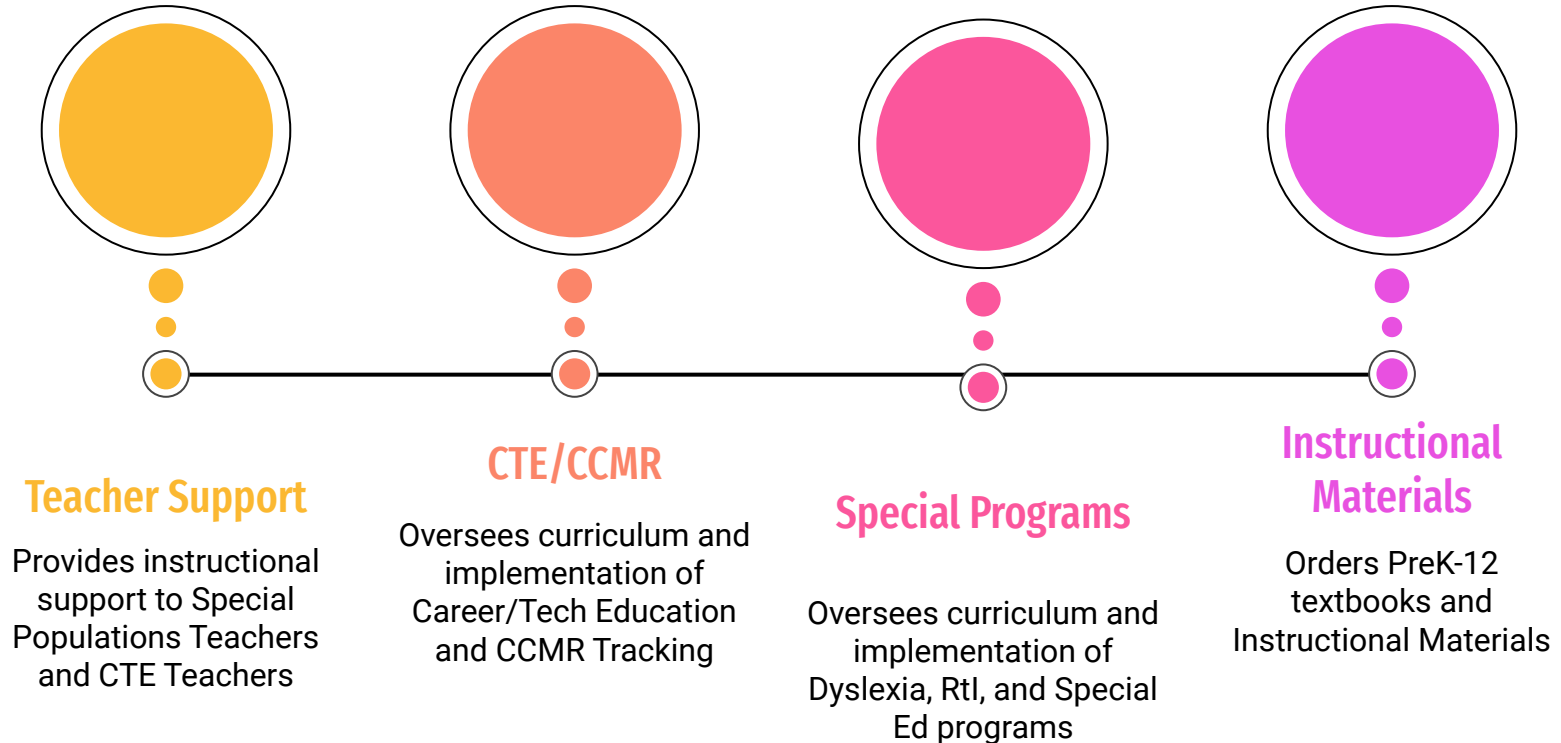
Assistant Superintendent

Cheryl Hendrix



Director of Special Programs

Amy Bickerstaff



Director of Curriculum & Instruction

Jessica Lee

Curriculum Staff



Oversees Consultants, Curriculum Specialists and Instructional Coaches, including schedules and assignment of tasks

Professional Development



Coordinates district professional development and implementation of PLCs. Meets with principals to meet support campus needs.

Instructional Data & Campus Support



Analyzes and Disaggregates data district wide, providing reports, recommendations and resources to campus principals

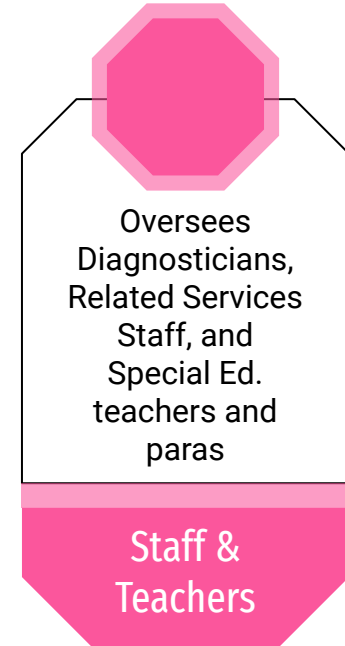
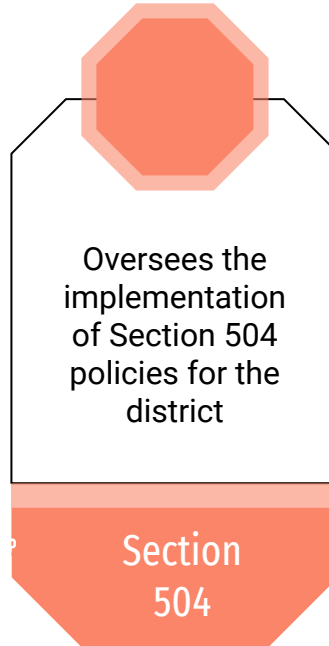
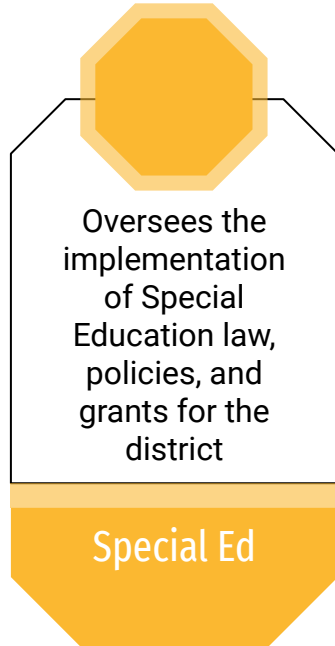
Curriculum & Instruction



Facilitates the creation and upkeep of the Curriculum Management Plan and the purchase of instructional materials

Director of Special Education & 504

Shelley Pinkerton



Curriculum Specialists

Kristy O'Bannon & Denise Jackson



Content Specialists

Ensures K-12 curriculum alignment through the creation of curriculum documents and assessments.



Teacher Support & Coaching

Provides resources and support to assigned teachers or teams in need of assistance.



PLCs and PD

Provides PD and support in assigned content area, including staying up to date on TEA content changes.

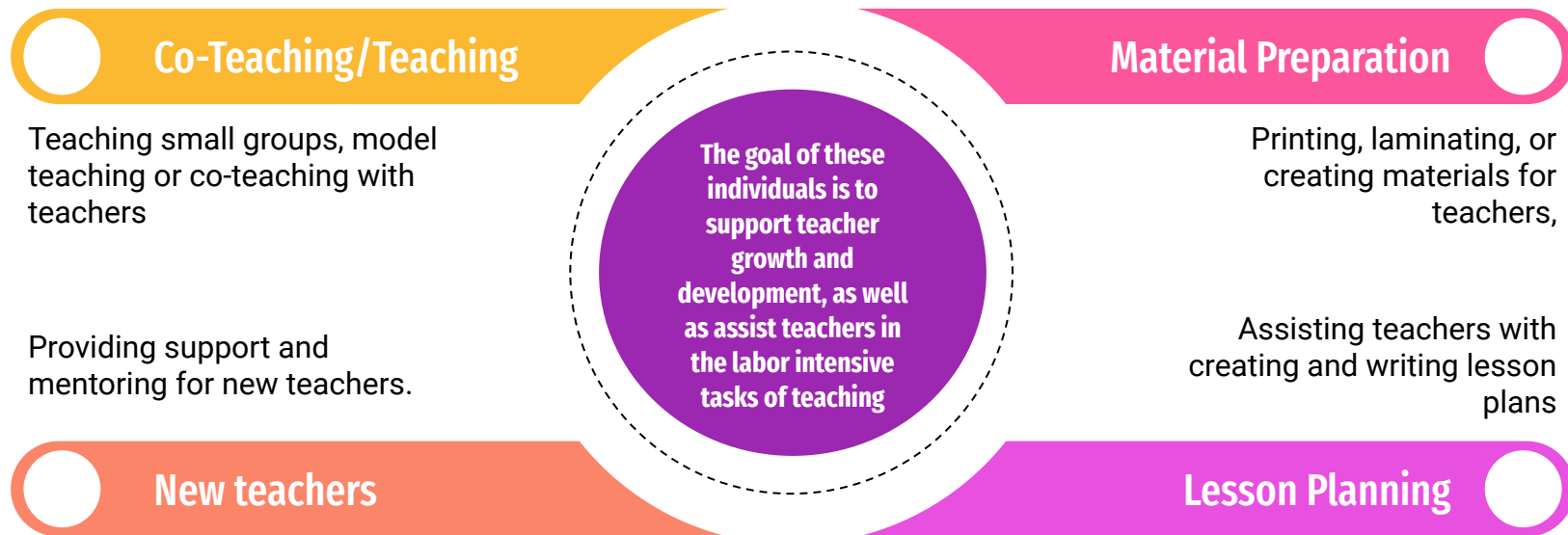


Curriculum Alignment

Provide continuity between campuses in the areas of strategies, resources, and programs.

Instructional Coaches

Lori McCurley, Melanie Barkemeyer, & Jennifer Carlile



Program Coordinators

**Cheryl Langston,
ESL Teacher/Coordinator**

ESL

Teaches ESL at Early Childhood and Primary Campuses. Coordinates ESL Parent Meetings, LPAC meetings and ESL paperwork. Assists in K-12 TELPAS Testing.

**Angie Stinson,
Reading Academy Specialist**

**Reading
Academies**

Implements and coordinates TEA Reading academies, per state standards and requirements.

Outside Instructional Consultants

Elementary RLA/LLI Kits - Crista Black

- cristagblack@gmail.com

Secondary RLA/STAAR/TEKS Resource System - Cyndi Nyvall

- cnyvall@esc7.net

K-12 Math - Stacey Grant

- sgrant0607@gmail.com

3-12 Social Studies - Cindy Nick

- cindynick@gmail.com



TEKS Resource System

TEKS Resource System

- We follow TRS scope and sequence for K - 12 Math, Reading, Science, and Social Studies
 - Vertical Alignment
 - TEKS Clarification
 - Year at a Glance
 - TEKS Verification
 - Resources
 - Instructional Focus Document (IFD)



We are here to SERVE YOU!

Content Planning: Lesson planning, PLCs, differentiating for student needs, finding resources for lessons, TEKS Resource System Support, textbook/resource support.

Data & Assessment: Data Analysis of assessment data, DMAC support, Test creation, formative assessment creation, STAAR support.

Instruction: Modeling a lesson, co-teaching a lesson, covering your class so you can watch another teacher teach, assisting during stations or small groups, observing your class/a student.

Teaching & Learning: Laminating/Color Printing, poster printing, virtual resources, instructional strategies/best practices for your content area, professional resources/books, professional development.

What to do when you need something!

Email curriculum@bullardisd.net

- This is a ticket system, like technology and maintenance, where we can assign the task to someone to take care of it for you.

Email your specialist & coach - please contact the right person by content area!

Check the [BISD Curriculum Resource Hub!](#)

CONTACT US!



Assistant Superintendent - cheryl.hendrix@bullardisd.net - 903-721-3484

Director of Curriculum - jessica.lee@bullardisd.net - 903-495-1307

Director of Special Programs - amy.bickerstaff@bullardisd.net - 903-571-6495

Director of Special Ed & 504 - shelley.pinkerton@bullardisd.net - 903-894-2876

K-12 RLA/SS Curriculum Specialist - denise.jackson@bullardisd.net - 972-523-2228

K-12 Math/Science Curriculum Specialist - kristy.obannon@bullardisd.net - 903-312-7013

Reading Academy Specialist - angie.stinson@bullard.net - 903-520-2577

K-12 RLA/SS Instructional Coach - melanie.barkemeyer@bullarid.net - 832-887-3042

K-12 Math/Science Instructional Coach - jennifer.carlile@bullardisd.net - 903-407-1988

First Year Teachers/Special Pops Instructional Coach - lori.mccurley@bullardisd.net - 903-714-6150

Let us know what you need and how we can help you this year! 14